

Need help?

User manual

See the user manual on the CD-ROM that is supplied with this product.

Online

Go to www.philips.com/dictation

Benötigen Sie Hilfe?

Benutzerhandbuch

Weitere Informationen finden Sie im Benutzerhandbuch auf der CD-ROM, die im Lieferumfang dieses Produktes enthalten ist.

Online

Besuchen Sie www.philips.com/dictation

Besoin d'aide ?

Manuel d'utilisation

Consultez le manuel d'utilisation figurant sur le CD-ROM fourni avec ce produit.

En ligne

Visitez notre site www.philips.com/dictation

¿Necesita ayuda?

Manual del usuario

Consulte el manual del usuario en el CD-ROM que se incluye con el producto.

En línea

Dirijase a www.philips.com/dictation

Per assistenza

Manuale di istruzioni

Consultare il manuale di istruzioni presente sul CD-ROM fornito con questo prodotto.

Online

Andare su www.philips.com/dictation

Hulp nodig?

Gebruikershandleiding

Raadpleeg de gebruikershandleiding op de CD-ROM die bij het product is meegeleverd.

Online

Ga naar www.philips.com/dictation

Behöver du hjälp?

Användarhandbok

Se användarhandboken på CD-ROM-skivan som medföljde produkten.

Online

Gå till www.philips.com/dictation



© 2009 Royal Philips Electronics.

All rights reserved.

Specifications are subject to change without notice.

Trademarks are the property of Royal Philips

Electronics or their respective owners.

Document Version 2.0, 16/10/2009.

5103 109 9719.1

For product information and support, visit
www.philips.com/dictation

SPEECHMIKE AIR



LFH3000
without SpeechExec
dictation software

LFH3005
with SpeechExec
dictation software

PHILIPS

EN Quick start guide

DE Kurzanleitung

FR Guide de démarrage rapide

ES Guía de inicio rápido

IT Guida rapida di introduzione

NL Snelle startgids

SV Snabbstartsguide

What's in the box

● Verpackungsinhalt ● Contenu de l'emballage ● Contenido del embalaje
● Contenuto della confezione ● Wat is meegeleverd ● Förpackningens innehåll



● Dictation microphone
● Diktiermikrofon
● Microphone de dictée
● Microfono de dictado
● Microfono di dettatura
● Dicteermicrofoon
● Dikteringsmikrofoon



● Docking station
● Station d'accueil
● Base de conexión
● Base de connexion
● Docking station
● Dockingsstation



● Receiver module
● Empfängermodul
● Module récepteur
● Módulo receptor
● Modulo di ricezione
● Receiver module
● Mottagningsmodul



● AC charger
● Ladegerät
● Chargeur secteur
● Cargador de CA
● Alimentatore CA
● A/C-oplader
● Nätladdare



● Exchangeable charging pins
● Austauschbare Ladestecker
● Fiches pour chargeur interchangeable
● Enchufes de carga intercambiables
● Spine di ricarica intercambiabili
● Verwisselbare oplaadpluggen
● Utbytbara laddningskontakter



● Rechargeable batteries
● Wiederaufladbare Batterien
● Piles rechargeables
● Baterías recargables
● Batterie ricaricabili
● Oplaadbare batterijen
● Laddningsbara batterier



● Pouch
● Tasche
● Houuse
● Estuche
● Custodia
● Etui
● Fodral



● Neckband
● Halstrageband
● Lanière
● Correa
● Cinturino per il collo
● Halsbandje
● Halsrem



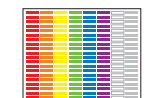
● USB cable
● USB-Kabel
● Câble USB
● Cable USB
● Cavo USB
● USB-kabel
● USB-kabel



● USB license key*
● USB-Lizenzschlüssel*
● Clé de licence USB*
● Llave de licencia USB*
● Chiave di licenza USB*
● USB-licentiesleutel*
● USB-licensnyckel*



● CD-ROM
● CD-ROM
● CD-ROM
● CD-ROM
● CD-ROM
● CD-ROM
● CD-ROM



● Color stickers
● Farbige Aufkleber
● Autocollants de couleur
● Adhesivos de color
● Adesivos colorati
● Kleurstickers
● Färgdekaler

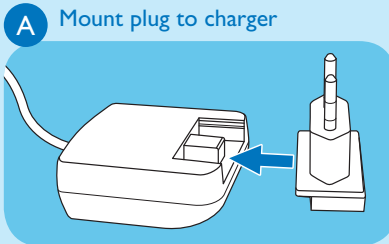


● Quick start guide
● Kurzanleitung
● Guide de démarrage rapide
● Guía de inicio rápido
● Guida rapida di introduzione
● Snelle startgids
● Snabbstartsguide

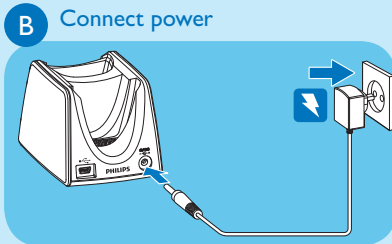
*LFH3005

1 Connect

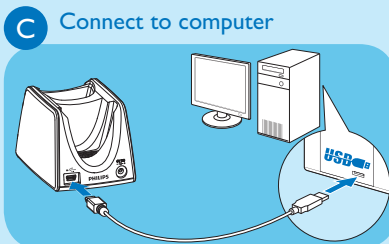
- Anschließen ● Brancher ● Conexión
- Collegamento ● Aansluiten ● Anslutning



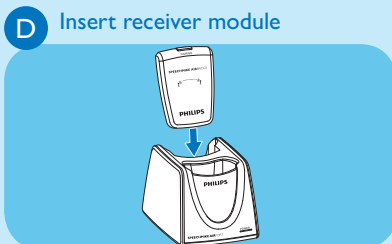
- Stecker an Ladegerät befestigen ● Insérer la fiche au chargeur
- Montar el enchufe en el cargador ● Inserir la spina nell'alimentatore ● Stekker insteken ● Anslut kontakten till nätladdaren



- Stromversorgung anschließen ● Brancher au réseau
- Conectar la alimentación ● Collegare l'alimentazione ● Aansluiten op het net ● Anslut strömmen



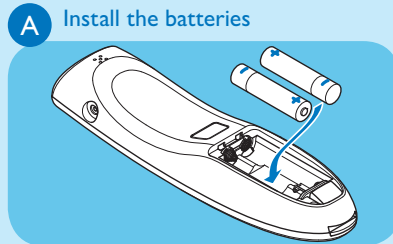
- Mit Computer verbinden ● Brancher à l'ordinateur
- Conectar al ordenador ● Connettere al computer ● Verbinden met computer ● Anslut till datorn



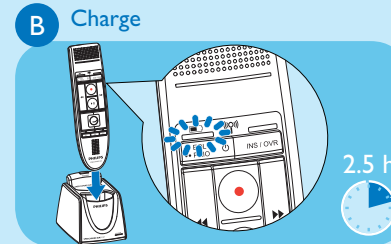
- Empfangsmodul einsetzen ● Insérer le récepteur ● Introducir el módulo receptor ● Inserir il modulo di ricezione ● Receiver module insteken ● Sätt i mottagningsmodulen

2 Install

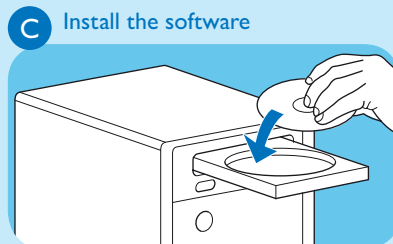
- Installation ● Installation ● Instalación
- Installazione ● Installatie ● Installation



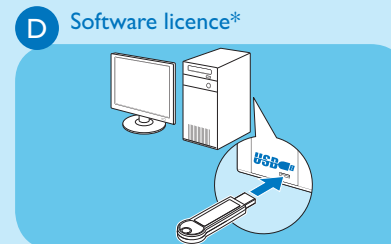
- Batterien einlegen ● Mettre les piles en place
- Colocar las baterías ● Inserir le batterie ● De batterijen plaatsen ● Installera batterierna



- Aufladen ● Charger ● Cargar
- Caricare ● Opladen ● Ladda



- Software installieren ● Installation du logiciel
- Instalar el programa ● Installare il software ● De software installeren ● Installera programvaran



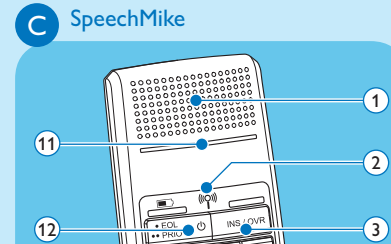
- Softwarelizenz* ● Licence logiciel*
- Licencia de software* ● Licenza software*
- Softwarelicentie* ● Programvarulicens* ● *LFH3005

3 Record

- Aufnehmen ● Enregistrer ● Grabación
- Registrazione ● Opnemen ● Inspelning



- Diktiersoftware starten ● Lancer le logiciel de dictée
- Iniciar el software de dictado ● Avviare il software di dettatura ● Start dicteersoftware ● Starta dikterings-programvaran



- ① ● Microphone ● Mikrofon ● Microphone ● Microfono ● Microfono ● Microfoon ● Mikrofon
- ② ● Wireless connection indicator light ● Kontrollleuchte für Funkverbindung ● Voyant de contrôle liaison radio ● Lámpara indicadora de conexión inalámbrica ● Spia luminosa connessione wireless ● Controlelampje draadloze connectie ● Indikatorlampe för trådlös anslutning
- ③ ● Insert/overwrite ● Einfügen/Überschreiben ● Insérer/écraser ● Insertar/sobreescribir ● Inserisci/sovraregistra ● Invoegen/overschrijven ● Läggt till/Skriv över
- ④ ● Record ● Aufnahme ● Enregistrement ● Grabar ● Registra ● Opname ● Spela in ● Reproducir/pausa ● Riproduci/pausa ● Afspelen/pauze ● Spela upp/Paus
- ⑤ ● Fast forward ● Schneller Vorlauf ● Avance rapide ● Avance rápido ● Avanti veloce ● Snel vooruit ● Snabbspola framåt
- ⑥ ● Play/pause ● Wiedergabe/Pause ● Lecture/Pause ● Reproducir/pausa ● Riproduci/pausa ● Afspelen/pauze ● Spela upp/Paus
- ⑦ ● Right mouse button ● Rechte Maustaste ● Bouton droit de souris ● Botón derecho del ratón ● Pulsante destro del mouse ● Rechter muisknop ● Höger musknapp
- ⑧ ● Trackball ● Trackball ● Boule de commande ● Bola de mando ● Trackball ● Trackball ● Styrkula
- ⑨ ● Programmable function keys ● Programmierbare Funktionstasten ● Touches de fonctions programmables ● Botones con función programable ● Pulsanti funzione programmabili ● Programmeerbare functietoetsen ● Programmerbara funktionsknappar
- ⑩ ● Speaker ● Lautsprecher ● Haut-parleur ● Altavoz ● Altoparlante ● Luidspreker ● Högtalare
- ⑪ ● Record indicator light ● Aufnahme-Kontrollleuchte ● Voyant d'enregistrement ● Lámpara indicadora de grabación ● Indicatore luminoso di registrazione ● Controlelampje opname ● Indikatorlampe inspeling
- ⑫ ● On/Off, end-of-letter (EOL), priority ● Ein/Aus, Briefende (EOL), Priorität ● Marche/arrêt, fin-de-lettre (EOL), priorité ● Encendido/apagado, fin-de-carta (EOL), prioridad ● Accensione/spengimento, fine-lettera (EOL), priorità ● Aan/uit, einde-brief (EOL), prioriteit ● På/Av, end-of-letter (EOL), prioritet
- ⑬ ● Rewind ● Rücklauf ● Retour ● Rebobinado ● Riavvolgi ● Terug ● Spola bakåt
- ⑭ ● Left mouse button ● Linke Maustaste ● Bouton gauche de souris ● Botón izquierdo del ratón ● Pulsante sinistro del mouse ● Linker muisknop ● Vänster musknapp